

FIREDOORS®

smoke and fire curtains

- AUTOMATIC SMOKE CURTAINS
- FIRE CURTAIN
- FIREPROOF GATES
- FIRE PROTECTION BARRIERS OF CONVEYOR OPENINGS



winner in nomination:
«THE BEST PRODUCT IN
PROVIDING FIRE SAFETY» -
automatic smoke curtains «FireDoors»

MISSION

To ensure highest fire safety in places of mass stay of people by innovating, developing and implementing modern and hi-tech fire safety systems.

«EuroFireDoors» is a Lithuanian company producing fire and smoke curtains, fire gates and fire protection barriers for conveyor openings. It is a subsidiary of «FireDoors» (Belarus), which has existed since 2014 and has a large list of complex and large-scale implemented fire safety projects in Belarus and Kazakhstan.

The company «FireDoors» is a part of «EuroRollet» group of companies which successfully works in the market of commercial real estate construction since 2006.

Our portfolio includes a number of extensive and large-scale projects such as:

- shopping centers:

Palazzo, Dana Mall, Gallery Minsk, ExpoBel, Moskva metropolitan;

- car dealer centers:

Audi, Renault, Caterpillar, Nissan, VW;

- hotels:

DoubleTree by Hilton Hotel Minsk, Hampton by Hilton Minsk City Centre, Shantar Hill;

- industrial buildings:

GreatStone - Industrial park;

- plants:

Minsk Civil Aviation Plant, FerroliBel;

- car plants:

BelAZ, BelGee, Amkodor, Unison;

- office buildings and residential complexes.

BENEFITS

For the Customer:



- Optimization of costs in the design of fire protection systems.
- Operational improvement of existing structures, development of new products.

For a design Organization:

- Technical consultancy at any stage of design.
- Quick preparation of technical solutions for the use of fire and smoke curtains.

For general Contractors:

- Commercial offer based on project documentation.
- High-quality installation, performed on time, installation supervision.

PRODUCTS

- Automatic fire curtains Ei30, Ei60, EW90, Ei120.
- Automatic and stationary smoke curtains DH60.
- Accordion-type automatic smoke DH60.
- Automatic fire gates Ei30, Ei60.
- Fire protection barriers of conveyor openings Ei120.

The company «EuroFireDoors» is interested in mutually beneficial cooperation with regional representatives and partners in the countries of the European Union, the Middle East, USA, Canada and Latin America.



Automatic fire curtains Ei30, Ei60, EW90, Ei120

Product description

Localizing the source of fire the fire curtain by «FireDoors» prevents the spread of fire, smoke and heat through the opening thereby enabling of a successful evacuation of people and minimizing possible damage.

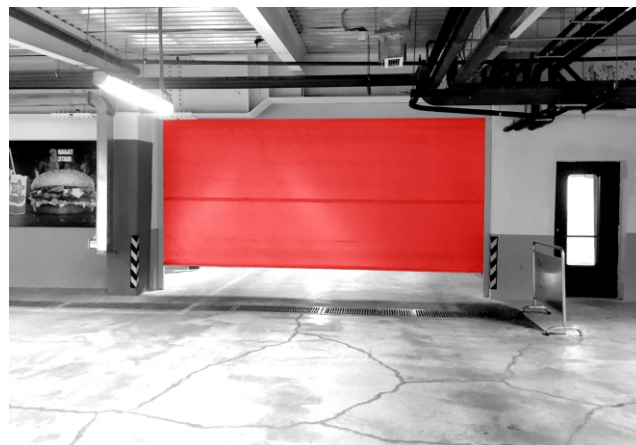
The up and down movement of the automatic fire curtain is carried out by a tubular electric drive and a control unit integrated into the central fire alarm system. When triggered by a fire alarm, the curtain unwinds and makes a barrier for fire and combustion products (smoke and carbon monoxide).

OPTION.

For the food industry and rooms with aggressive environment fire curtains are made in corrosion-resistant version (stainless steel).

Application field:

- shopping centers, hotels,
- airports, train stations,
- underground parking lots,
- storage rooms,
- production facilities,
- automobile centers,
- production facilities with flammable liquids,
- logistics centers,
- areas with high fire safety requirements.



Specification

construction type	fire curtain vertical
Fire resistance	Ei30, Ei60, EW90 Ei120 (with irrigation)
Standard	EN 13501-2
Curtain thickness	0,4-20 mm
Unwinding speed of the curtain	0,18 m/s
Power consumption	up to 500 Wt
Supply voltage	230 V
Curtain size	10 m width, 8 m high
Curtain frame colour	any RAL

Accordion-type automatic smoke curtains DH60

Product description.

An automatic accordion smoke curtain is a dynamic fire barrier with a closed loop of almost any configuration: rectangle, polygon, circle and oval. The use of the accordion smoke curtain by «FireDoors» without side guides enables to meet almost any requirements for the interior.

Using the «FireDoors» accordion smoke screen without side rails (and with side rails) allows you to meet almost any interior requirements.

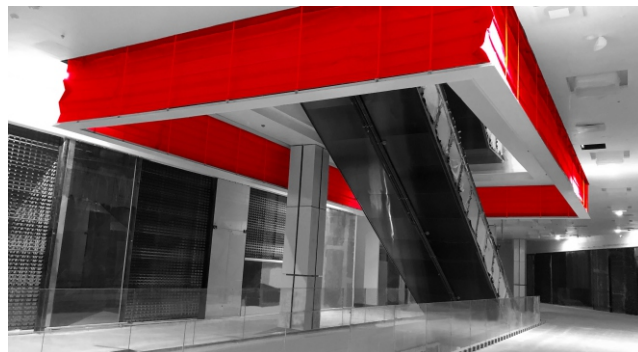
The up and down movement of the curtain is provided by a tubular electric drive and a control unit integrated into the central fire alarm system.

The automatic accordion smoke curtain is applied:

- to make a barrier to the flow of smoke and hot gases as well as to direct them to the smoke exhaust systems
- to cut off separate areas or ways of evacuation of people from the smoke-filled area
- to restrict the actions of fire due to the use of flexible heat resistant fabric in curtains

Application area:

- atrium protection, escalator protection.



Specification

construction type	accordion smoke curtain
configuration	Closed Rectangular, polygon-shaped, circular, elliptical
Classification:	D60 and DH60
- Annex D - Temperature time	
- Annex C - Smoke permeability	
- Annex B - Reliability /Durability	leakage rate not exceeding 25m ³ per m ²
Standard	1000 cycles
Curtain size	EN 12101-1
Unwinding speed of the curtain	unlimited in width, up to 10 m high
Power consumption	0,18 m/s
Supply voltage	500-2000 Wt
Curtain frame colour	230 V
	any RAL

Automatic and stationary smoke curtains DH60

Product description

An automatic smoke curtain is designed flexible and convertible to prevent the movement of smoke and heat in the ceiling area of large buildings by channeling or containing the smoke and heat.

The up and down movement of the curtain is provided by a tubular electric drive and a control unit integrated into the central fire alarm system.

The main component of a stationary smoke protection curtain is a smoke protection fabric, which provides high smoke and gas impermeability, protection from fire and combustion products in various temperature conditions. The contour of the curtain is framed by a steel corner. Installation of such smoke protection curtains is very simple and quick.

Application field:

- atrium protection, escalator protection,
- shopping centers, hotels
- airports, train stations,
- underground parking lots,
- storage rooms,
- production facilities,
- automobile centers,
- production facilities with flammable liquids,
- logistics centers,
- areas with high fire safety requirements.



Specification

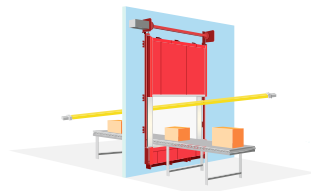
construction type	smoke curtain vertical
Classification:	D60 and DH60
- Annex D - Temperature time	
- Annex C - Smoke permeability	leakage rate not exceeding 25m ³ per m ²
- Annex B - Reliability /Durability	1000 cycles
Standard	EN 12101-1
Curtain weight	440 g/m ²
Curtain thickness	0,4 mm
Curtain size	up to 50 m width, up to 10 m high
Unwinding speed of the curtain	0,18 m/s
Power consumption	up to 500 Wt
Supply voltage	230 V
Curtain frame colour	any RAL

Fire protection barriers of conveyor openings Ei120

Product description

Conveyor openings fire protection barriers are automatic barriers that close the conveyor opening when the fire alarm is triggered, protecting it from the spread of fire, combustion products and radiant heat.

The operation of the Fire Barrier Control Unit is synchronized with the operation of the conveyor.



For example, the belt cleaning system under the chute.

A diagonal photocell monitors the overlapping area and stops the conveyor line if an empty space is detected.

Advantages of Conveyor Aperture Barriers:

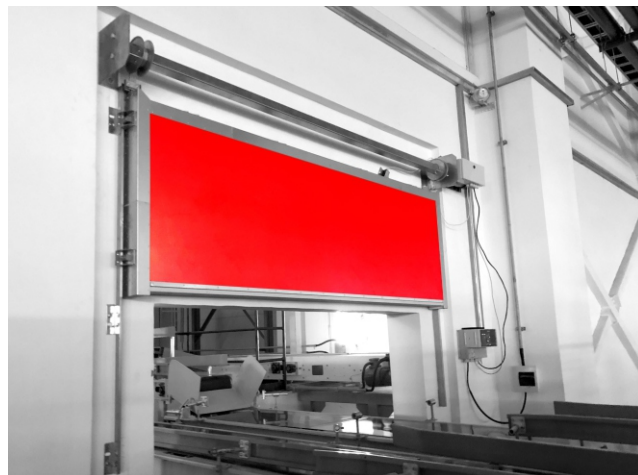
- installation is performed without changing the design of the conveyor,
- the ability to cover complex openings of different shapes,
- installation of barriers on various types of openings and conveyor designs (split, pass-through, sorter, tray, newspaper).

OPTION.

For the food industry and areas with aggressive environment fireproof barriers are made in corrosion-resistant version (stainless steel).

Application field:

- production facilities.



Specification

construction type	fire protection barriers of conveyor openings Ei120
Fire resistance	Ei120
Standard	EN 13501-2
Plate thickness	100 mm
Obstacle lowering speed	0,06-0,18 m/s
Power consumption	up to 1500 Wt
Supply voltage	380 V
Color	any RAL

Automatic fire gates Ei30, Ei60

Product description

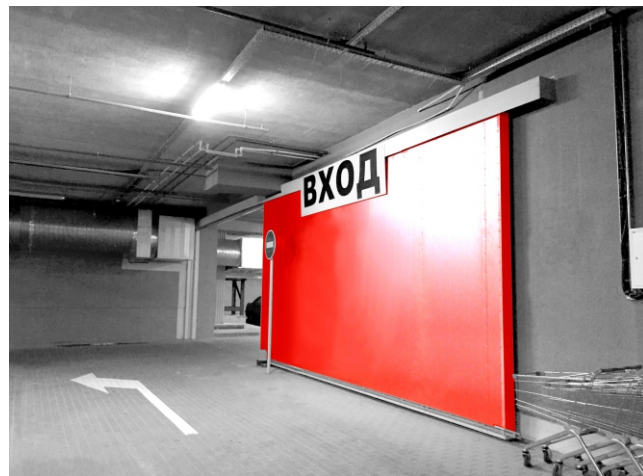
Fire gates - an automatic barrier, which when triggered by a fire alarm closes the opening, protecting it from fire, combustion products and radiant heat.

OPTIONS.

- For the food industry and areas with aggressive environment fireproof barriers are made in corrosion-resistant version (stainless steel).
- To evacuate people, the gate can be equipped with a wicket door.

Application field:

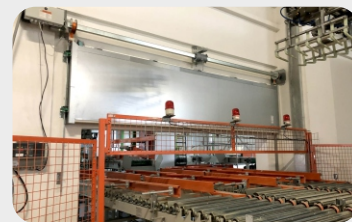
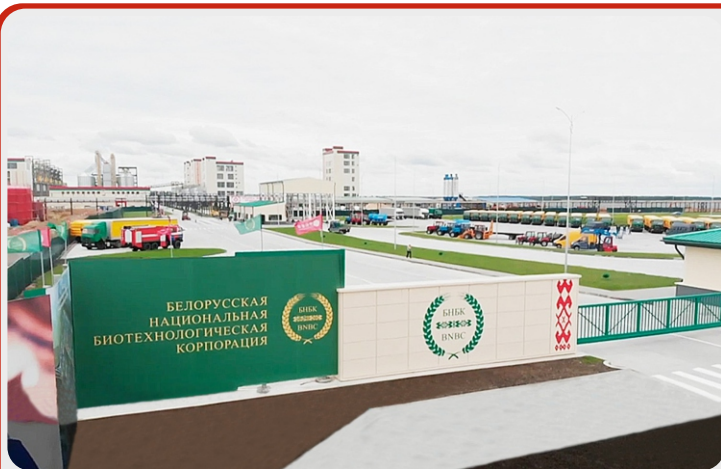
- shopping centers, hotels,
- airports, train stations,
- underground parking lots,
- storage rooms,
- production facilities,
- automobile centers,
- production facilities with flammable liquids,
- logistics centers,
- areas with high fire safety requirements.



Specification

construction type	Automatic fire gates Ei30, Ei60
Fire resistance	Ei30, Ei60
Standard	EN 13501-2
Plate thickness	100 mm
Closing speed	0,2-0,3 m/s
Power consumption	up to 500 Wt
Supply voltage	230 V
Max size	10 m width, 8 m high
Color	any RAL

List of objects



«Belarusian National Biotechnological Corporation» CJSC, Minsk region
Automatic fire curtains «FireDoors», fire protection barriers of conveyor openings

List of objects



Shopping and entertainment center «Palazzo», Minsk
Accordion-type automatic smoke curtains «FireDoors»

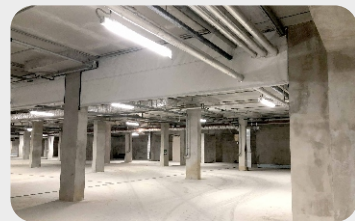
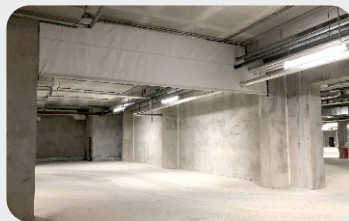
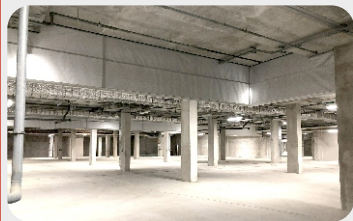
List of objects



Construction hypermarket «Mile», Minsk

Automatic sliding fire gates «FireDoors» Ei60 and swing fire gates, automatic fire curtains «FireDoors» Ei120

List of objects



Hotel and business complex «Shanter Hill», Minsk
Stationary smoke curtains «FireDoors»

List of objects



Construction hypermarket «OMA», Minsk
Automatic sliding fire gates and fire curtains «FireDoors»

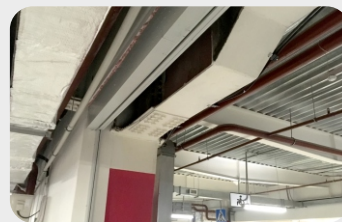
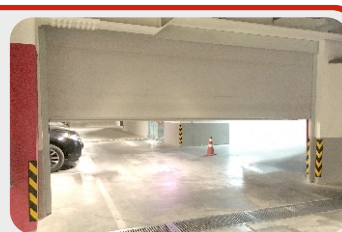


Shopping center «Gallery Minsk», Minsk
Automatic sliding fire gates «FireDoors» Ei60

List of objects



Shopping center «Outleto», Minsk
Automatic sliding fire gates «FireDoors» Ei60

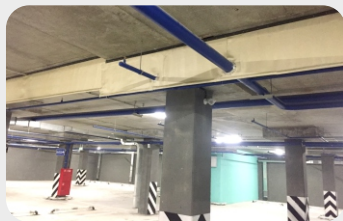
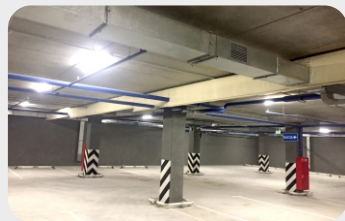


Shopping center «Moskva», Almaty, Kazakhstan
Automatic fire curtains «FireDoors» Ei120

List of objects



Shopping center «Yarkiy», Minsk
Swing fire gates

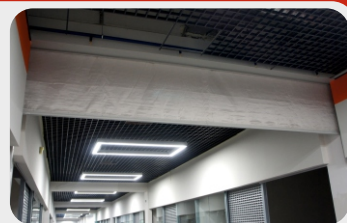


Residential complex «Novaya Borovaya», Minsk
Stationary smoke curtains «FireDoors»

List of objects



Shopping center «DANA MALL», Minsk
Swing fire gates

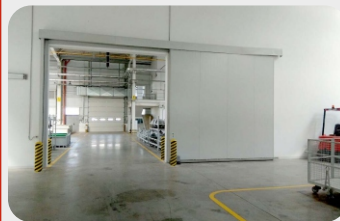


Shopping center «Carousell», Bobruisk
Automatic fire curtains «FireDoors»

List of objects

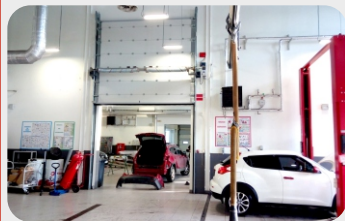


Car center «Parade Auto», Minsk
Automatic sliding fire gates «FireDoors» Ei60



Car plant «BelGee», Minsk region
Automatic sliding fire gates «FireDoors» Ei60

List of objects



Car center «Nissan», Minsk
Fire lifting gates

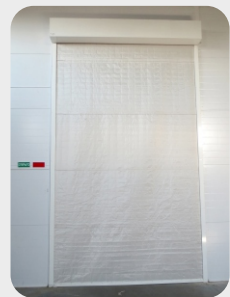


Car center «Renault», Minsk
Automatic sliding fire gates «FireDoors» Ei60

List of objects



Wholesale warehouse «Yumabel», Minsk
Automatic fire curtains «FireDoors» Ei120



Logistics center «EurAsia», Minsk region
Automatic fire curtains «FireDoors» Ei120

List of objects



Garage of the «Belarusbank», Minsk
Automatic fire curtains «FireDoors» Ei120



Auto parts warehouse «MotorLand», Minsk
Automatic sliding fire gates «FireDoors» Ei60

List of objects



«Veles-Mit» Ltd., Minsk region
Automatic fire curtains «FireDoors» E60



Factory «BelWoodDoors», Minsk
Automatic fire curtains «FireDoors» Ei120

List of objects



Plant «Onega Plus», Minsk district
Automatic sliding fire gates «FireDoors» Ei60



Plant «FerroliBel», Minsk district
Automatic sliding fire gates «FireDoors» Ei60

List of objects

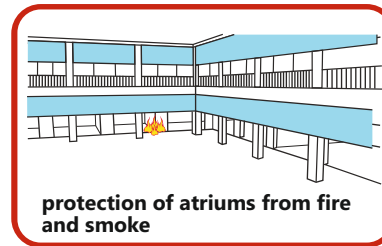
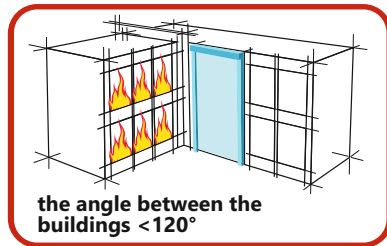
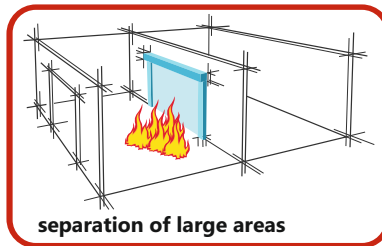
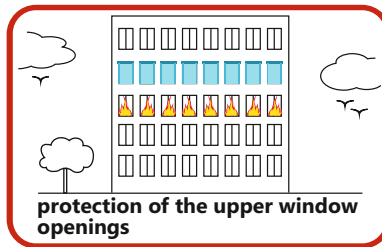
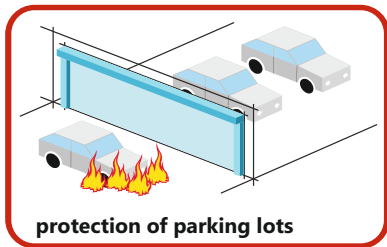


Plant «Amkodor-Elastomer», Minsk region
Automatic sliding fire gates «FireDoors» Ei60



Plant «BellaPak», Minsk
Automatic fire curtains «FireDoors» Ei120

The scope of application





Central office FireDoors Ltd.

Soltysa str., 187
Minsk, Belarus, 220070

Telephones:

+375 (44) 783-80-03

WhatsApp, Telegram:

+7 (910) 001-57-55

e-mail: sales@firedoors24.com
www.firedoors24.com

